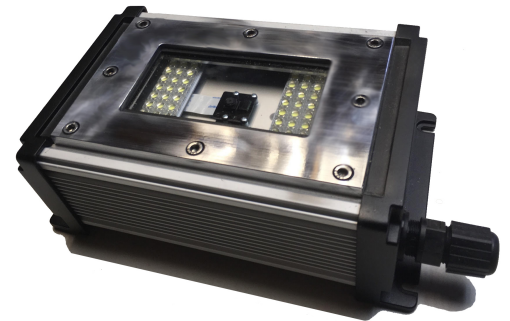


Plant Vision Camera DATA SHEET (PVX1000/1010)

Uses:

- Froth Analysis & Flotation Optimization
- Ore Analysis & Crushing/Grinding Optimization



Advantages:

- **No Server required.** This lowers project cost and allows IT upgrades to occur independently.
- **Easy Single Wire Installations.** Both power and data are transmitted through a single cable.
- **Distributed Computing.** Never experience a plant-wide image analysis software crash/restart again. Individual cameras can be reset/restarted minimizing the negative impact to the entire APC system. Never have to upgrade a server just because you want to add more cameras to the system.
- **ALL-In-One Design.** CPU/Lights/Camera/Mount are self contained in an IP67 enclosure for robustness and ease of install.
- **Intelligent Cameras.** Each camera can run a unique calibration based on it's specific location (models that combine breakage, natural segregation, etc for each camera location can be used). Intelligent automation for lighting intensity helps combat ambient light variations (times of day, year, etc) reducing the need for mechanical shielding. Realtime changes to frame rate and resolution are used to ensure optimal performance is provided under all operating conditions.

Camera Properties	
Resolution (pixels)	3280 x 2464
Viewing Frame Dimensions, mm	4.60 (Diagonal)
Images per second recorded per camera	30@1080p , 60@720p, and 90@ 640x480
Digital Image Data Type	H264 /Mp4/Jpeg/Mpeg/BMP
Total Mass (incl lights and housing) (kg)	2.0
Overall Camera Housing Dimensions, mm	87 x 225 x 254
Lighting / Illumination Details	Dual Integrated 10 year life LED lighting Arrays
Materials of Construction	
Camera Enclosure(s)	Hard Anodized 6061 Aluminum or Stainless Steel
Camera Enclosure(s) – IP Rating	IP67
Characteristics – Image Analyzer	
Manufacturer	KnowledgeScape
Processor	1.2 GHz 64-bit quad-core / per camera
Memory	1 GB of RAM / per camera
Data Refresh Rate, seconds	30